

Overview and Scrutiny - Topic Selection assessment

Topic under consideration.....

1. Does the topic represent a key issue for local people and is it likely to result in improvements for local people?

		Yes
		No

2. Is the issue strategic and significant?

		Yes
		No

3. Does the topic fall within a Community or Corporate priority area?

		Yes
		No

4. Is it likely to lead to effective outcomes?

		Yes
		No

*Stage 1 (validity) assessment - **reject** any topic with a 'No' response to any of questions 1 to 4.*

5. Will scrutiny involvement be duplicating some other work?

		Yes
		No

*Stage 2 (validity) assessment - **reject** any topic with a 'Yes' response to question 5*

6. Is it an issue of concern to partners and stakeholders?

		Yes
		No

7. Is it an issue of community concern or is there a high level of dissatisfaction with the service?

		Yes
		No

8. Are there adequate resources available to do the activity well?

		Yes
		No

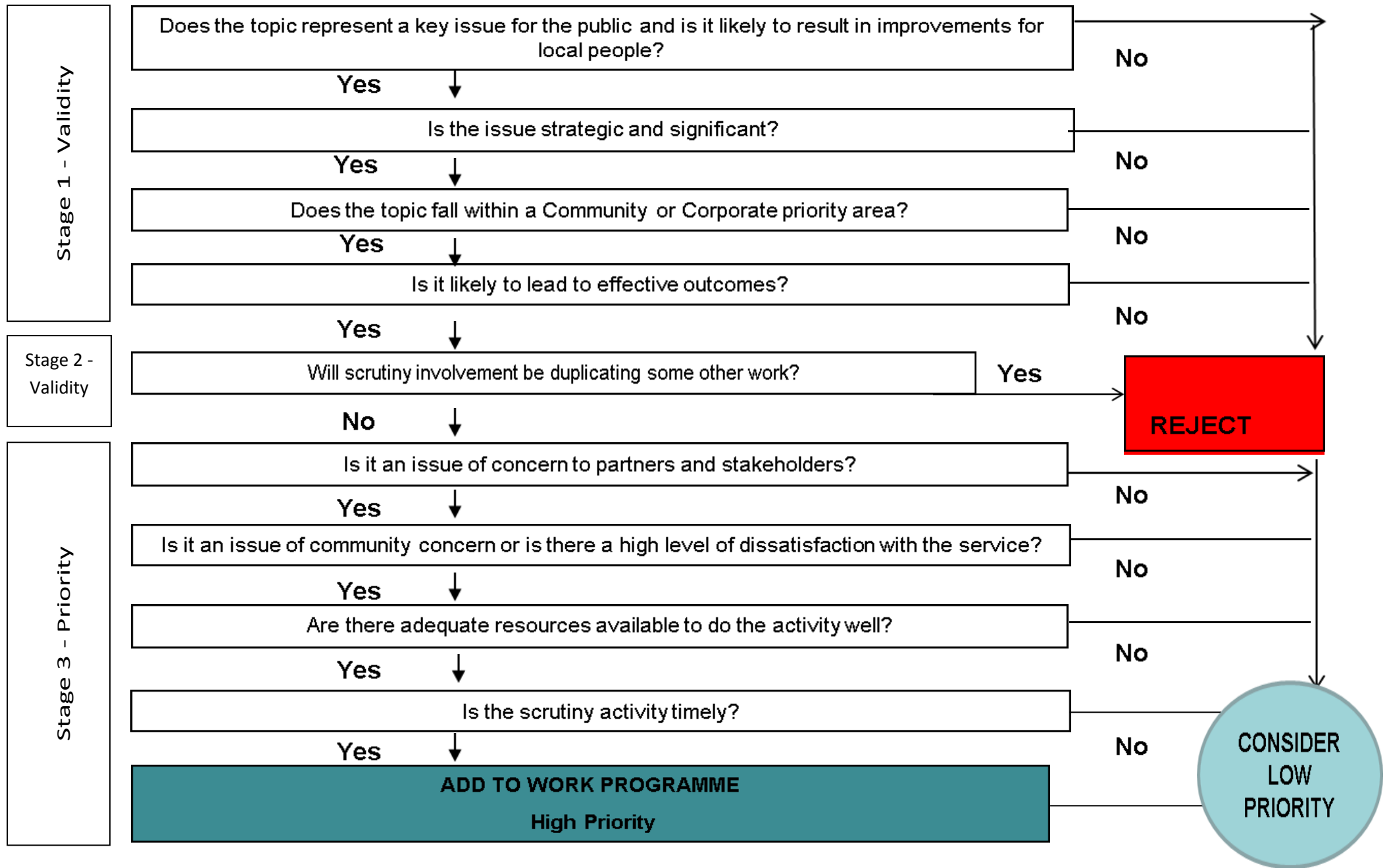
9. Is the scrutiny activity timely?

		Yes
		No

Stage 3 (priority) assessment

*Topics with a 'No' response to any of questions 6 to 9 should be deemed **LOW PRIORITY***

*Topics with a 'Yes' response to all of questions 6 to 9 should be deemed **HIGH PRIORITY***



Does the topic represent a key issue for the public and is it likely to result in improvements for local people?

No

Yes

Is the issue strategic and significant?

No

Yes

Does the topic fall within a Community or Corporate priority area?

No

Yes

Is it likely to lead to effective outcomes?

No

Yes

Will scrutiny involvement be duplicating some other work?

Yes

No

Is it an issue of concern to partners and stakeholders?

No

Yes

Is it an issue of community concern or is there a high level of dissatisfaction with the service?

No

Yes

Are there adequate resources available to do the activity well?

No

Yes

Is the scrutiny activity timely?

No

Yes

ADD TO WORK PROGRAMME
High Priority

REJECT

CONSIDER LOW PRIORITY

Stage 1 - Validity

Stage 2 - Validity

Stage 3 - Priority